

Upgrade to open source.



open-source integrated library system

**koha*****ZOOM***

***Find it faster.***



**LIBLIME**

OPEN-SOURCE SOLUTIONS FOR LIBRARIES





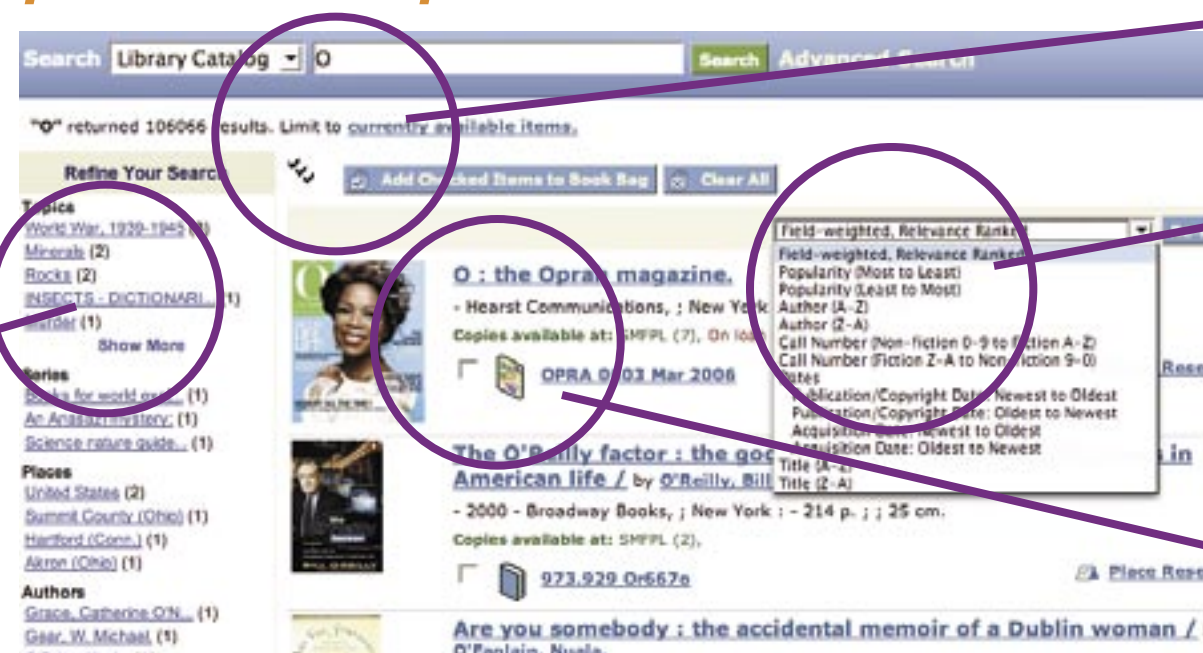
## Flexible.

a powerful full-featured search engine. Scalability to tens of millions of records. Multiple record formats. Integrated meta-searching. Need we say more?

kohaZOOM

# Next generation catalog.

## powerful simple search...



> Elegant simple search

> On-the-fly Re-sort from the results page

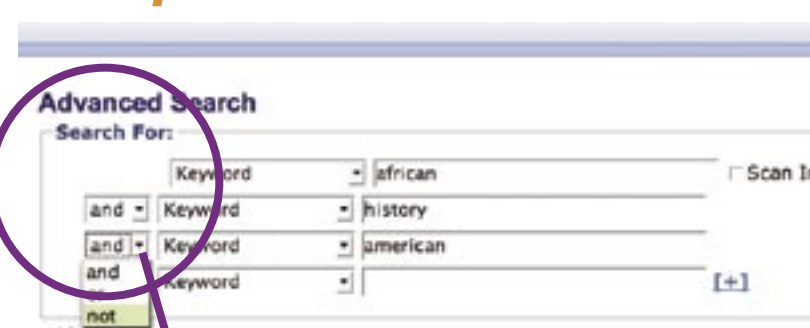
> Powerful relevance ranking

> Field-weighted search results

> Refine-by options

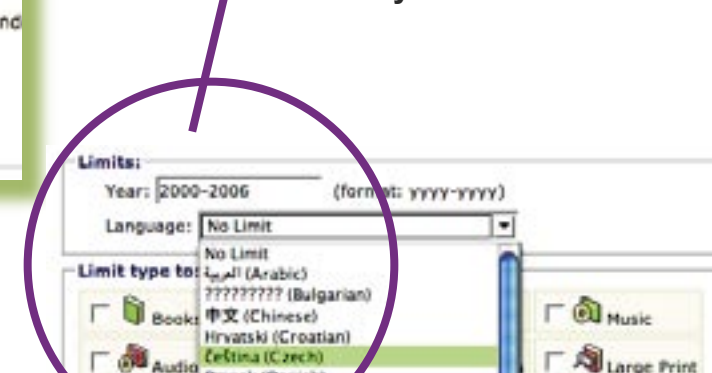
> FRBR support through xISBN and ThingISBN

## comprehensive advanced search ...



> Exact boolean searching

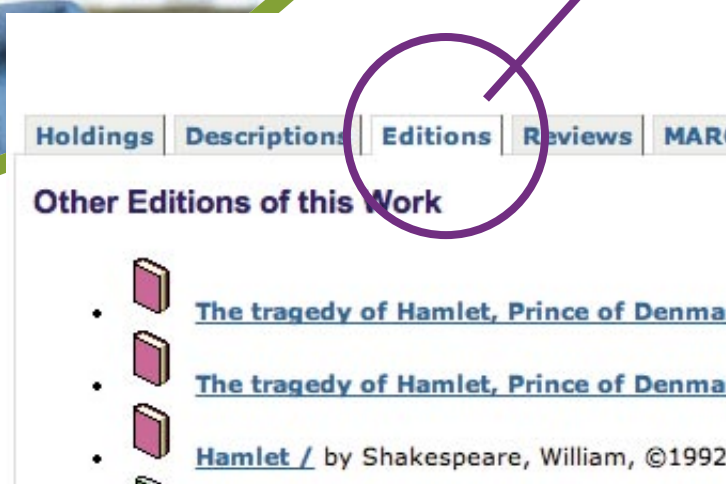
> Limit-by-date



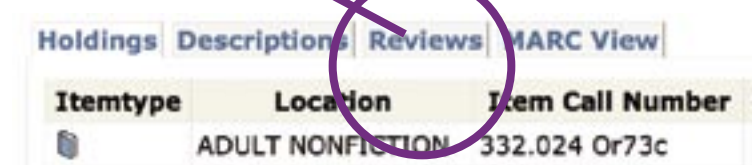
> Limit-by-language



> Customizable item-type limits



> Enriched bibliographic content through Amazon.com: cover images, "Read it now", "Search inside", descriptions, reviews and ratings





kohaZOOM



**MORE ON ACCOUNT MANAGEMENT >** Koha's patron interface is extremely flexible and highly customizable to your library's unique policies. You decide if patrons should be able to change their password or view their borrower history by logging into their account. Like many of Koha's features, these options can be enabled or disabled through Koha's administrative interface.

## > manage their account

By logging into their account, your patrons can:

- renew overdue items
- place, track and cancel reservations
- change their password
- modify account information
- view their borrowing history (optional)
- view and pay fines
- make and manage purchase suggestions
- set up notifications

Koha's patron interface is friendly and easy-to-use. Patrons can view messages from librarians in the privacy and convenience of their online account. Your library can also send messages to all patrons to announce holidays, closings and special activities.

## > email + print + reserve from the Book Bag

Koha's **Book Bag** feature is a shopping cart for patrons' selections. Patrons can select and save a list of items they find in the library catalog, then e-mail or print the list to make searching the shelves easier. Use the Book Bag for bulk reservations-- placing a reservation on an entire list of items instead of placing a reserve on one item at a time. Koha Book Bag is an invaluable tool for educators, students and staff! Save search queries, e-mail the list to a group.

# Do it yourself. Online.

**MORE ON VIRTUAL SHELVES >** Public shelves can be viewed by all, but edited only by the shelf's creator. Private shelves can only be viewed and edited by the creator. Free Shelves bring Readers' Advisory to a whole new level by letting your users collaborate to create evolving lists which everyone can enjoy.

Koha gives your users the convenience and privacy they deserve with outstanding self-service tools. Now, your users can do it themselves from anywhere, online! Your library's catalog will be more relevant to your users than ever before, and will free up staff time for those services that truly require a library professional.

## > create + share book lists

Koha's **Virtual Shelves** enable staff and patrons to create permanent book lists which can be shared with others. Your staff can easily create online Reading Lists for patrons. Best of all, Virtual Shelf items link directly to your library catalog! Virtual Shelves come in three varieties--public, private and free-- which can be enabled or disabled to reflect your library's unique policies. Library staff can use Virtual Shelves to create recommended reading lists or track popular book clubs and series.

## > track acquisitions via RSS

**RSS** (Really Simple Syndication) is a convenient way to keep up with new content on your favorite website. LibLime integrates RSS feeds into your catalog, so instead of having to click through or search the various sections of your library's catalog to see what's new, patrons can opt-in to an RSS feed which pushes that information directly to their computer!



"science fiction" returned 1879 results. Limit to currently available items.



### > easy navigation

Mouse-based navigation with optional shortcut keys streamline efficiency.

### > auto e-notices

Auto e-notices for overdue and reserves save staff time.

### > full acquisitions

Koha's feature-rich full acquisitions module makes ordering items a cinch. Additionally, it provides your cataloging team with the tools they need to manage the MARC records for these items as they enter the library's collection. Here are a few of the highlights:

- Full serials support
- Manage orders from vendors
- Budgets and pricing information
- Management of borrower suggestions
- Archives

## Customize.

don't settle for 'almost'. Customize Koha's interface to truly support your staffs' workflow!

koha**ZOOM**

Koha **ZOOM**'s web-based Staff Client has been optimized for efficient task-switching, and streamlined to minimize page reloads. In fact, the style and layout of the interface were chosen by librarians who use it daily-- a great example of Koha's user-centric design. LibLime's comprehensive support and training options make the transition from your legacy system to Koha a smooth one for you and your staff. Usable interfaces mean you can get back to the fun part of being a librarian!

# Staff Client. Customize it.

### > Z39.50 support

Native Z39.50 server and client for resource sharing.

### > MARC management tools

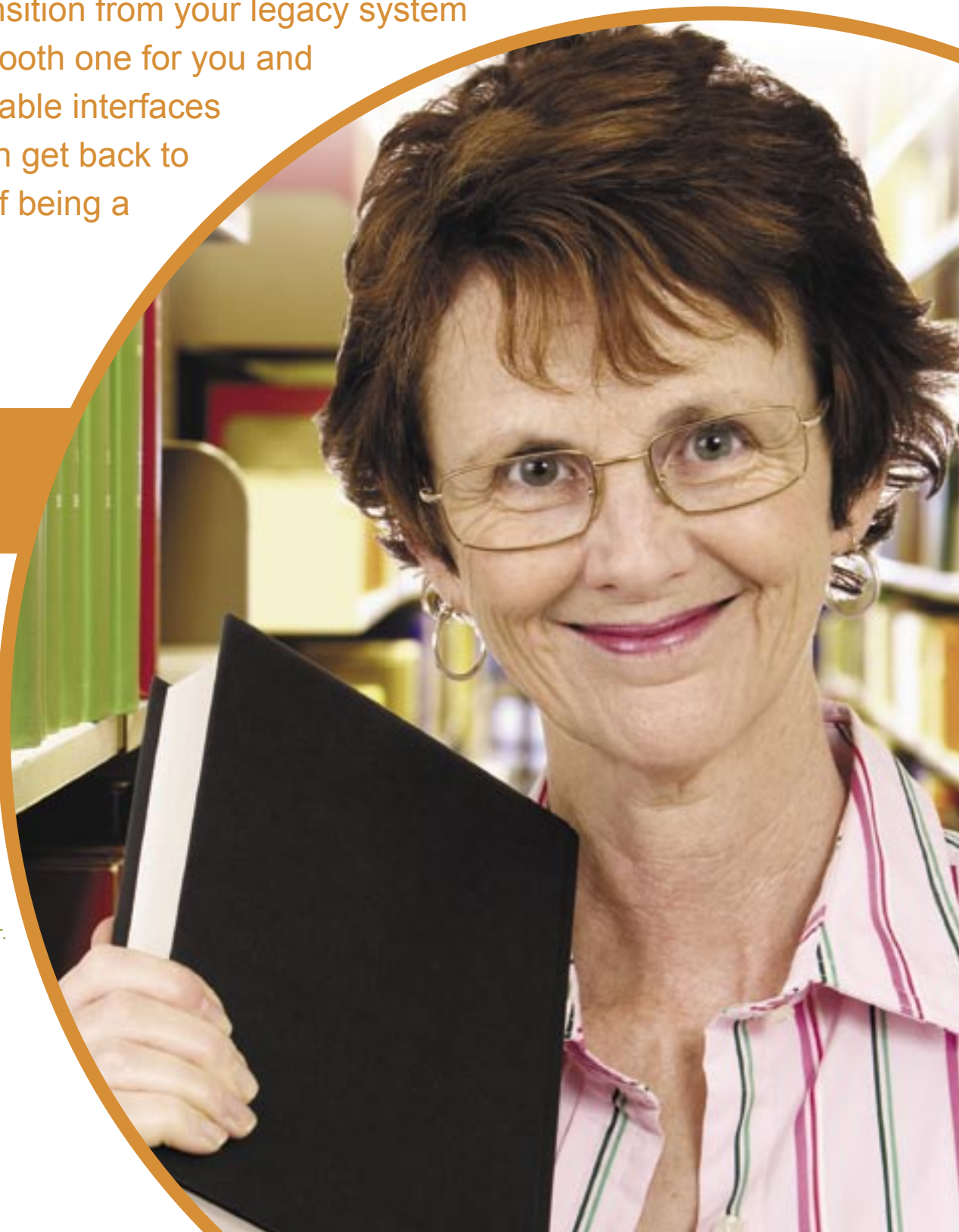
Koha's MARC support is rich, encompassing both MARC21 and UNIMARC. Combined with MARC editing and management tools, cataloging staff can easily and efficiently manage a library's collection of MARC records. These tools include:

- MARC frameworks to support monographs, serials, etc.
- MARC authorities control
- Serials management
- Support for LOC, Dewey or any other classification

### > Full-featured

- Multiple libraries and transfers
- Circulation and fines
- Patron management
- Acquisitions module
- Serials management
- Authorities control
- Integrated Z39.50 for resource sharing
- Printing functions for barcode labels, ID cards, and overdue notices

**MORE ON WEB-BASED STAFF CLIENT** > Koha's staff client is web-based. This means there is no application to install on every staff computer. Additionally, updates happen server-side-- so no more waiting for bug fixes to be applied on each computer.





## > reduced costs

The software itself is free. You pay only for the product support and training (if any) that you need. When a user sponsors development of new functionality, the whole community benefits. Software functions are paid for only once making open-source software cost-efficient. Libraries using open-source software benefit from many advanced technology solutions that they otherwise could not afford to develop themselves yet they still have the option to steer development if they so desire. Moreover, since open-source software developers like **LibLime** use a business model that relies on providing support and training for software rather than selling the right to use the software, the per-library support costs go down. Just think how you can re-allocate monies currently tied up in high annual licensing fees.

## > innovate + collaborate

Open source empowers libraries to innovate and collaborate. Not only can you download and use open-source software for free, you're free to alter it in any way you see fit. By sponsoring development of new features for Koha through **LibLime**, you don't need an IT staff to make your ideas a reality. No more waiting to see if your software vendor decides to incorporate your suggestions in to the next version. Koha puts the power in your hands. This isn't just a theoretical model: as you read this, libraries worldwide are actively collaborating together to make Koha the future of library software. You can too.

## > choose your support

In a proprietary software development model, you pay high license fees to use the software. If your vendor isn't providing you with adequate support or isn't allowing you the freedom to customize and improve the software to

# Dollars and sense of Koha.

meet your needs, switching vendors means switching software. And then there's the matter of migrating your data from one vendor to the next. With open source, switching to another service provider or migrating to an in-house solution is simple. In fact, at LibLime, if managing your library software in-house is a goal we can help you achieve it. Further, an open-source software development model means that your data is YOUR data. Our customers have unfettered access to all of their data all of the time in standard formats at no additional charge.

## > the future is 'open'

Open source in libraries has its challenges as well. Till now, library software vendors have built their businesses around a proprietary software development model, and, as a result, libraries have been slow to adopt open source. Many libraries simply do not have the in-house expertise to support open-source software development, and also don't have the ability to train staff on the use of the new technologies. They rely on software vendors to provide them with solutions. This is where LibLime comes in. We're informing libraries about the superiority of the open-source development model so they can provide their patrons with better technology services, faster and cheaper. And we make it possible for libraries to use open-source software by providing them with outstanding support and training options.

Open source is here. It's growing. You can be a part of it.

“ *The ROI speaks for itself. Open source is cost-affordable and technologically-sound choice. It enables libraries to position themselves to be prepared for technology changes in the future.* ”

--Doug Dotterer,  
Director Stow-Munroe Falls Public Library

## Invest.

**no vendor lock-in. No need to switch software just because you are switching vendors. Long-term security, pure and simple.**

koha**ZOOM**



LibLime is the library community's most trusted provider of open-source solutions. Rather than sell software licenses for static, hard-to-customize software products, we're informing libraries about the benefits of open source, enabling them to make choices about how best to provide their communities and staff with better technology services. We enable libraries to use open-source software to its full potential by providing outstanding commercial support services, tailored to each customer's needs.

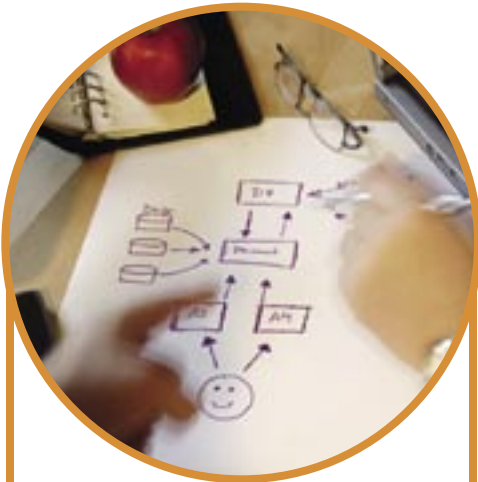
# Why choose LIBLIME ?



## > fully-managed solutions

Hosting • Data Migration • Installation & Configuration

No IT staff is required to take advantage of LibLime's fully-managed solutions. We're prepared to take care of every level of the migration process, from data extraction and standardization to normalization and import into your new system. If you have IT staff, LibLime is happy to work with you to leverage those resources.



## > development + customization

The freedom to customize is one of the biggest advantages of choosing open source. That's why LibLime offers software development and customization services. By sponsoring development of new features through LibLime, your library can help steer development of your ILS software. LibLime will see to it that your features get contributed back to the larger library community, facilitating true collaboration.



## > training + support

With seasoned librarians on staff, LibLime understands the importance of staff training to ensure a smooth transition when switching software solutions. That's why we provide both on-site and online training packages.

Since LibLime is a service-oriented company, support is at the heart of what we do. LibLime offers comprehensive email and phone support.





***The leader in open-source  
solutions for libraries***



**LIBLIME**

14 North Court Street  
Suite 305 Athens, OH 45701  
tel: 888.564.2457 | fax: 888.564.2457  
<http://www.liblime.com> | [sales@liblime.com](mailto:sales@liblime.com)